

- KEY**
- 1 Exterior, wall-mounted artwork. Materials must be durable, weather-resistant, appropriate for exterior use in marine environment, and not patina or oxidize in a way to impact surrounding architectural finishes. Attachment of artwork to building must be coordinated with architect after award of the commission. Installation requires a knowledgeable general contractor. Conduit and a j-box are already installed behind the exterior metal panel cladding to support possible electrification of a piece or illumination; this will require a licensed electrician.
 - 2 Two-story space in main stairwell, opportunity for mural or other artwork. South and west walls only, which are also visible from lobby and corridors through interior windows. Must be 2D; projections greater than 4" are disallowed unless minimum 84" above floor. All projections are disallowed in specific zones, see elevation diagram. Mural paint materials must be cleanable and zero-VOC. Alternate mural materials, if used, must meet ASTM E84 Class A rating for flammability and smoke development. Proposed artwork, materials, and assemblies are subject to building code compliance.
 - 3 Second floor corridor, directly across from elevator and main stair. Generally 2D, overall projection of piece must not exceed 4" when securely installed. Maximum size 17' x 4' - 2".
 - 4 Large Conference Room, long narrow opportunities above visual display and AV equipment. Could include one or both locations identified. Maximum dimensions 20' x 1' - 6".
 - 5 Small Conference Room, opportunity for a wall-hung artwork. Generally 2D, overall projection of piece must not exceed 4" when securely installed. Maximum size 14' - 6" x 5".
 - 6 Large Conference Room, opportunity for a wall-hung dimensional piece such as a mask. Intent is for a single item at one of the two possible locations shown. maximum size 2' - 10" x 4' - 6".
 - 7 Executive Administration Suite, wall-mounted artwork. Generally 2D, overall projection of piece must not exceed 4" when securely installed. Design intent is for a single larger piece at the west wall or possibly a diptych or pairing of works hung on west and north walls as a grouping. Maximim dimensions 7' - 6" x 4' at north wall or 12' x 4' at west wall.



Petersburg
MEDICAL CENTER

ARTWORK LOCATIONS - FIRST FLOOR

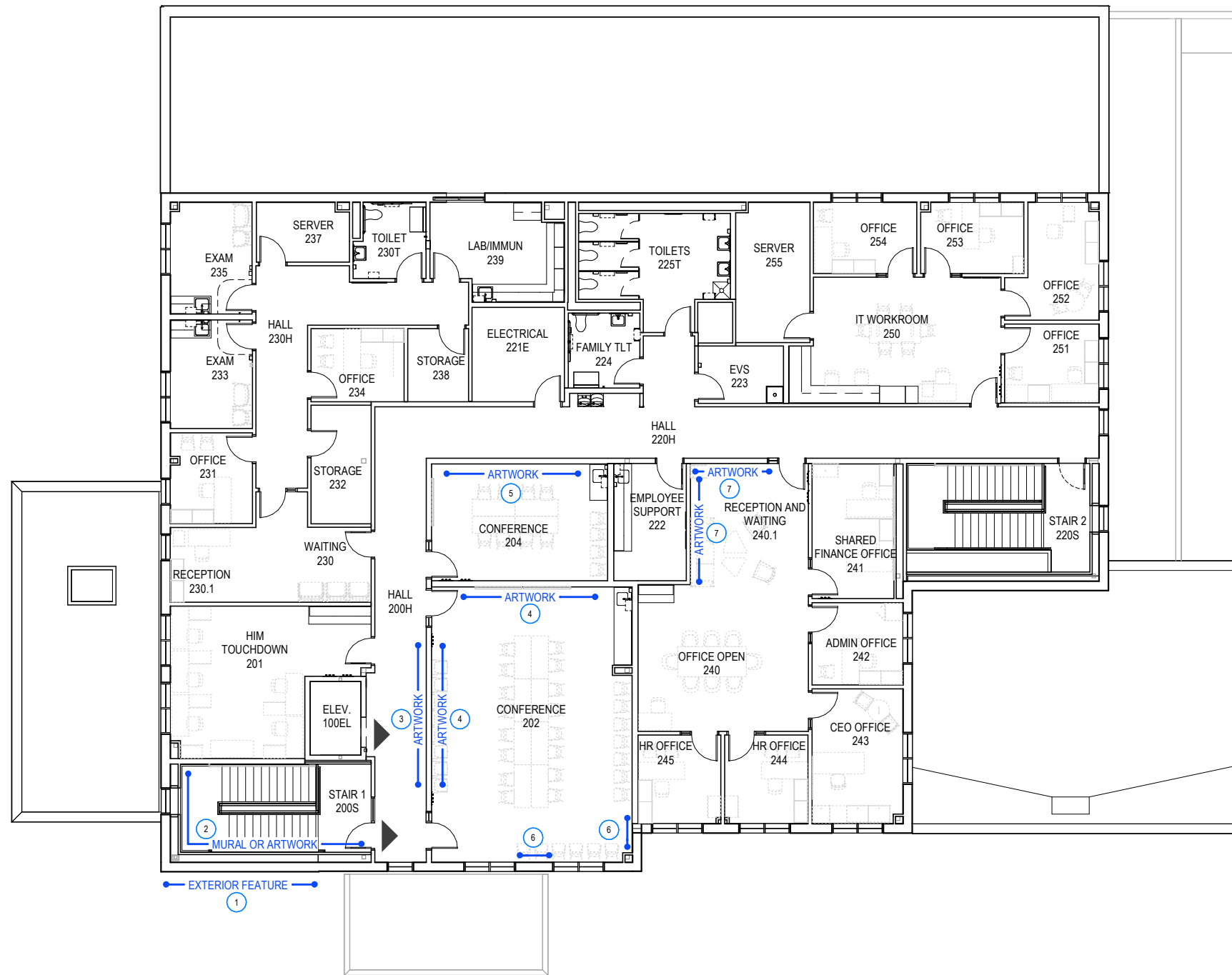
WELLNESS, EDUCATION, AND RESOURCE CENTER - PETERSBURG, ALASKA



November 12, 2025

BETTISWORTH
NORTH

BETTISWORTHNORTH.COM



- KEY**
- 1 Exterior, wall-mounted artwork. Materials must be durable, weather-resistant, appropriate for exterior use in marine environment, and not patina or oxidize in a way to impact surrounding architectural finishes. Attachment of artwork to building must be coordinated with architect after award of the commission. Installation requires a knowledgeable general contractor. Conduit and a j-box are already installed behind the exterior metal panel cladding to support possible electrification of a piece or illumination; this will require a licensed electrician.
 - 2 Two-story space in main stairwell, opportunity for mural or other artwork. South and west walls only, which are also visible from lobby and corridors through interior windows. Must be 2D; projections greater than 4" are disallowed unless minimum 84" above floor. All projections are disallowed in specific zones, see elevation diagram. Mural paint materials must be cleanable and zero-VOC. Alternate mural materials, if used, must meet ASTM E84 Class A rating for flammability and smoke development. Proposed artwork, materials, and assemblies are subject to building code compliance.
 - 3 Second floor corridor, directly across from elevator and main stair. Generally 2D, overall projection of piece must not exceed 4" when securely installed. Maximum size 17' x 4' - 2".
 - 4 Large Conference Room, long narrow opportunities above visual display and AV equipment. Could include one or both locations identified. Maximum dimensions 20' x 1' - 6".
 - 5 Small Conference Room, opportunity for a wall-hung artwork. Generally 2D, overall projection of piece must not exceed 4" when securely installed. Maximum size 14' - 6" x 5".
 - 6 Large Conference Room, opportunity for a wall-hung dimensional piece such as a mask. Intent is for a single item at one of the two possible locations shown. maximum size 2' - 10" x 4' - 6".
 - 7 Executive Administration Suite, wall-mounted artwork. Generally 2D, overall projection of piece must not exceed 4" when securely installed. Design intent is for a single larger piece at the west wall or possibly a diptych or pairing of works hung on west and north walls as a grouping. Maximim dimensions 7' - 6" x 4' at north wall or 12' x 4' at west wall.



Petersburg
MEDICAL CENTER

ARTWORK LOCATIONS - SECOND FLOOR

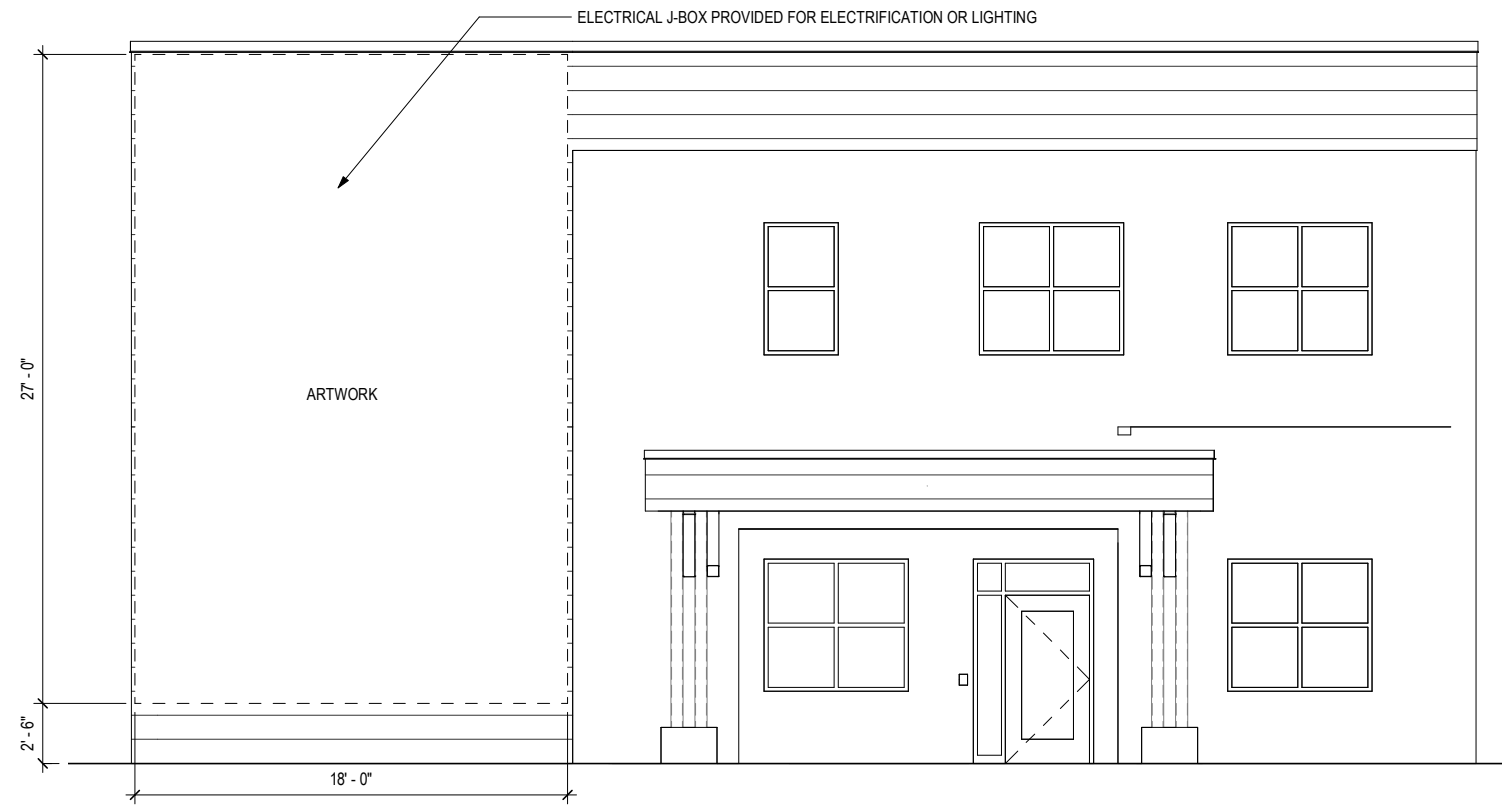
WELLNESS, EDUCATION, AND RESOURCE CENTER - PETERSBURG, ALASKA



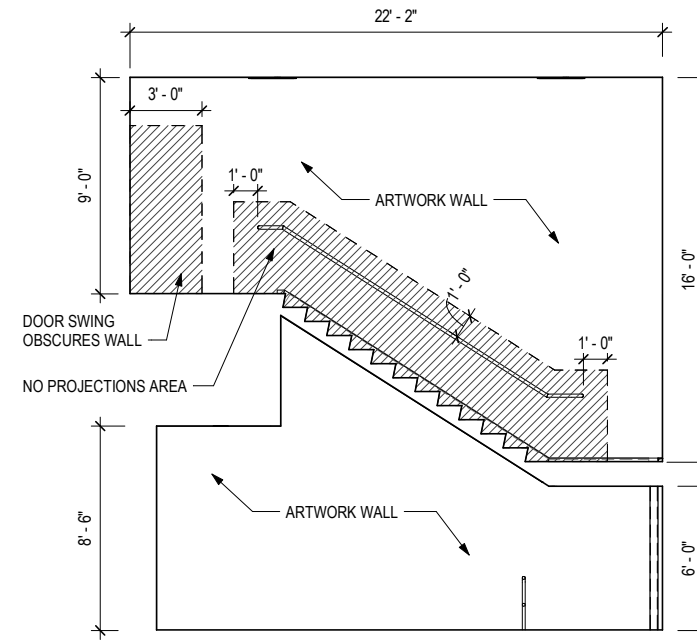
November 12, 2025

BETTISWORTH
NORTH

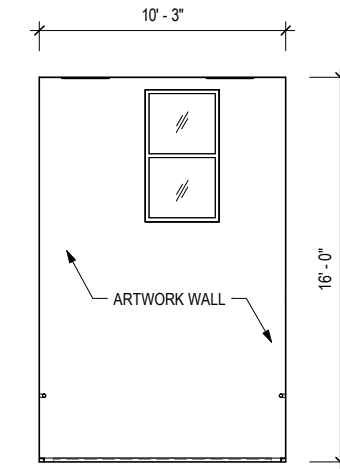
BETTISWORTHNORTH.COM



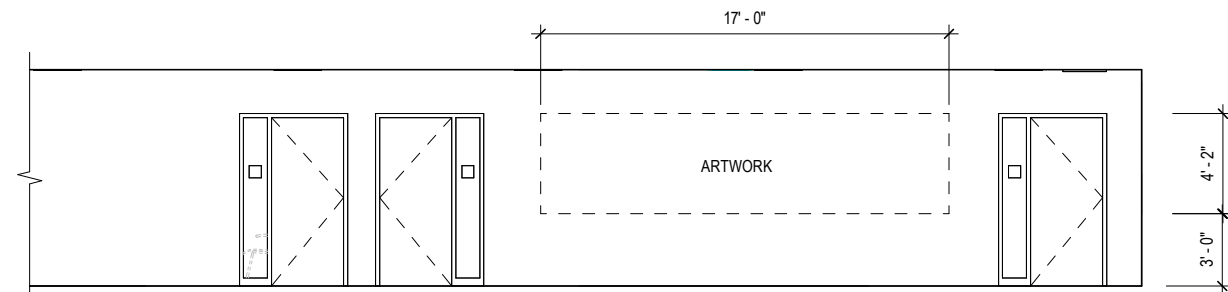
1 - EXTERIOR ARTWORK LOCATION
1/4" = 1'-0"



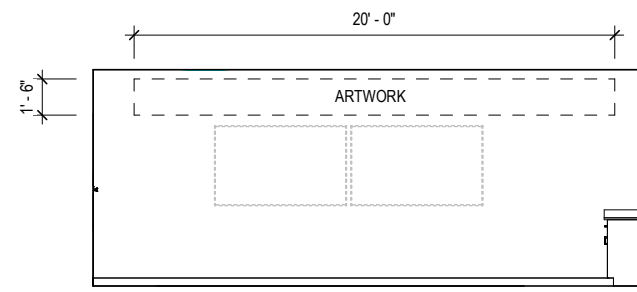
2 - MURAL LOCATION - S
1/4" = 1'-0"



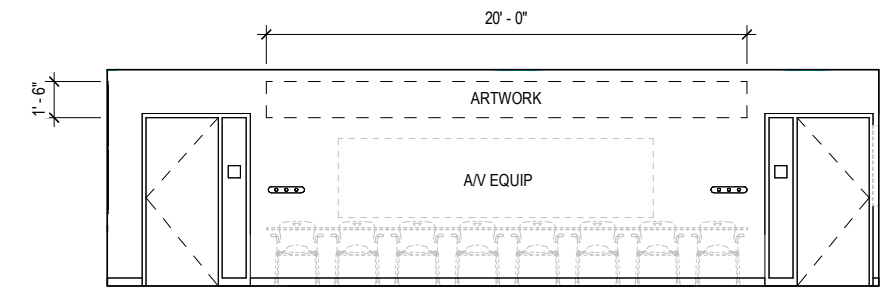
2 - MURAL LOCATION - W
1/4" = 1'-0"



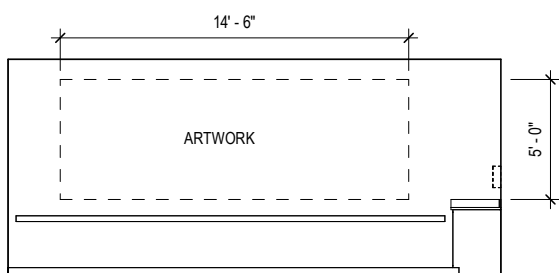
3 - HALL 200H - E
1/4" = 1'-0"



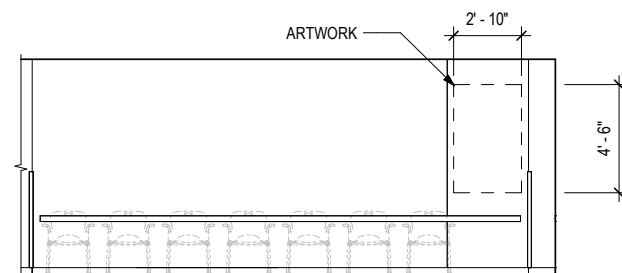
4 - CONFERENCE 202 - N
1/4" = 1'-0"



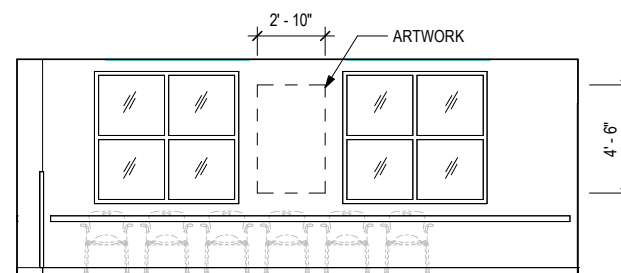
4 - CONFERENCE 202 - W
1/4" = 1'-0"



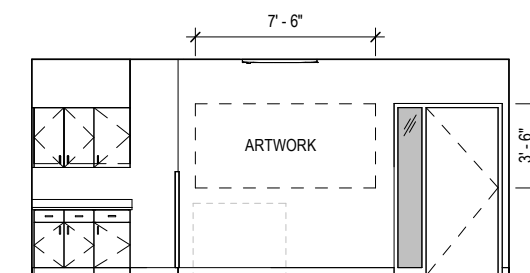
5 - CONFERENCE 204 - N
1/4" = 1'-0"



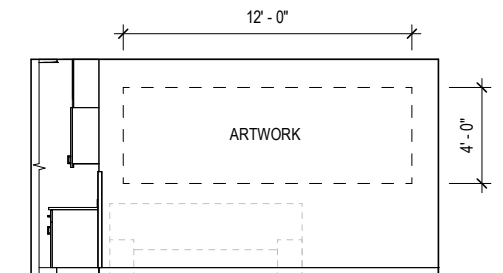
6 - CONFERENCE 202 - E
1/4" = 1'-0"



6 - CONFERENCE 202 - S
1/4" = 1'-0"



7 - RECEPTION & WAIT 240.1 - N
1/4" = 1'-0"



7 - RECEPTION & WAIT 240.1 - W
1/4" = 1'-0"



Petersburg
MEDICAL CENTER

ARTWORK LOCATIONS - ELEVATIONS

WELLNESS, EDUCATION, AND RESOURCE CENTER - PETERSBURG, ALASKA

0 1 2 3 4 5 10 November 12, 2025

BETTISWORTH
NORTH

BETTISWORTHNORTH.COM